



Federal
Public Service
FINANCE



HOW TO: BREXIT IN BELGIUM



WWW.FIN.BELGIUM.BE

CUSTOMS AND EXCISES • FEDERAL PUBLIC SERVICE FINANCE

.be



PREPARATION OF THE BELGIAN CUSTOMS ADMINISTRATION

Infrastructure

- ICT
 - PLDA
 - NCTS
- Recruitment & training
- Equipment
 - Scanvan
 - Luggage scanners
 - (Drone)



Communication plan

- General actions
 - Brexit webpage
 - Brexit call center
- Businesses
 - National forum
 - Speakers/seminars
 - Double interviews
- Private individuals
 - Brochure

Declarations



Import
+14%

Export
+47%

Officers



+291/386

Call center



6 FTE's
(+70 2nd
line)

Available
9:00-16:30

National forum



2018 - ...

Brexit note
august 2019



UNACCOMPANIED FREIGHT TRAILER OR CONTAINER

Benefits for Brexit:

- No driver required for crossing → **availability**
 - Trucks and drivers do not need **licences** to operate overseas
 - **Space** for storage and warehousing
 - **Predictable** time of delivery
- Requirements:
 - Transport on both side
 - Perishables require conditioned transport





HOW DOES IT WORK?

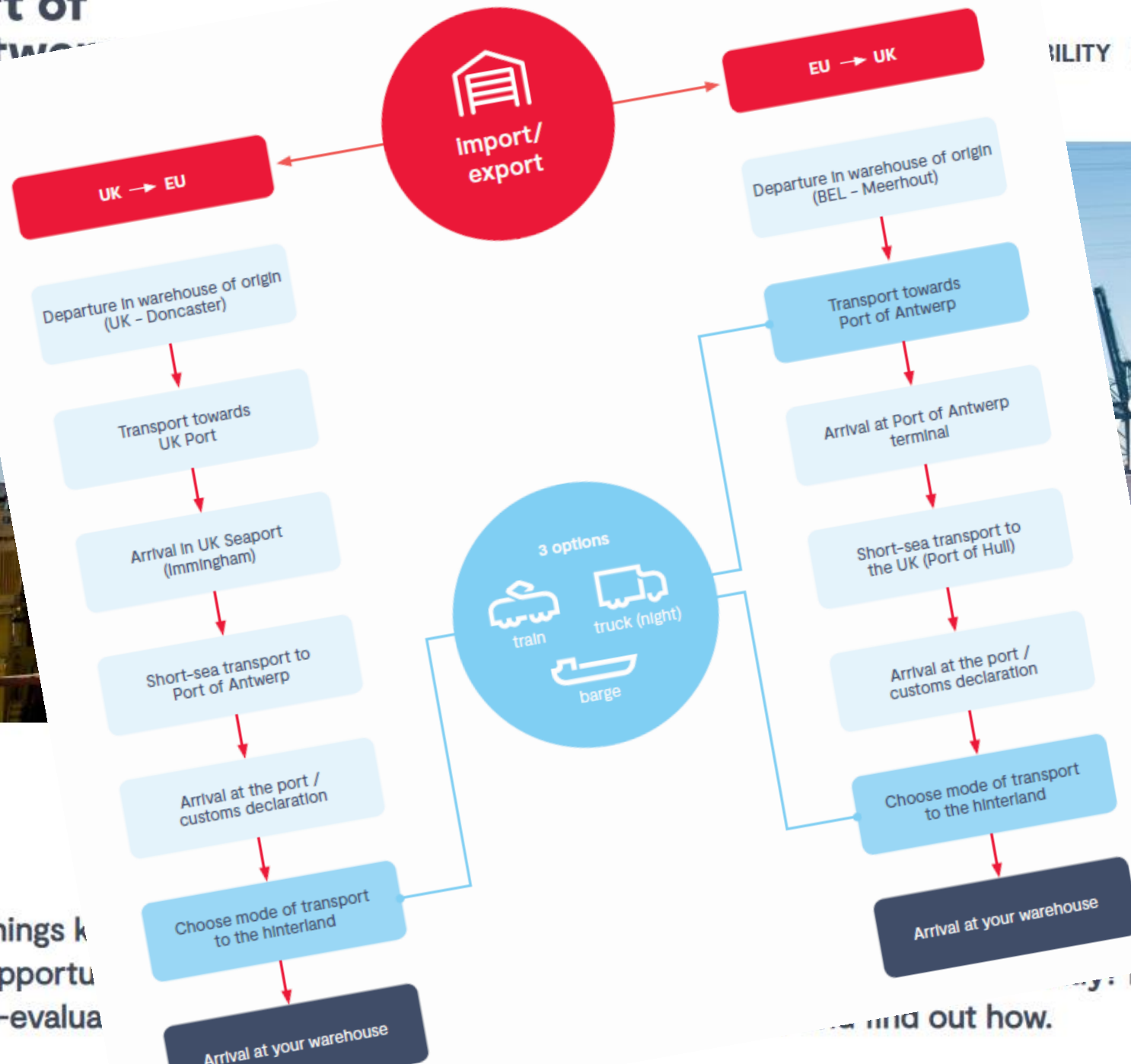
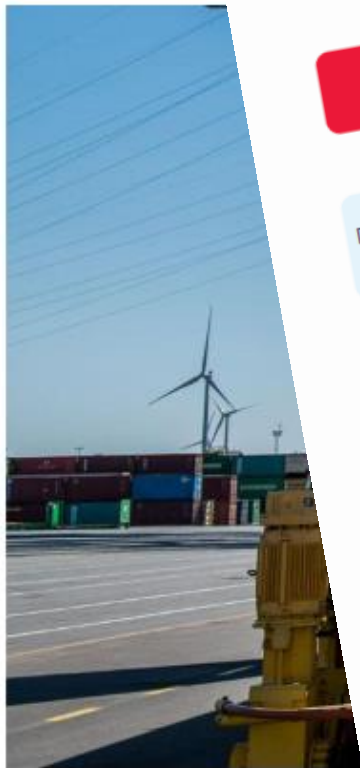
- ENS is lodged by the carriers
- Transit procedure or full declaration possible, **no need for pre-lodging of declarations**
- Short sea container lines in Antwerp and Ghent
- Ro-Ro services (unaccompanied) in Zeebruges





BELGIAN PORTS: PRACTICAL INFORMATION

- Antwerp:
 - <https://www.portofantwerp.com/en/are-you-ready-for-brexit>
 - Community system: Nxtport
- Zeebrugge
 - <https://portofzeebrugge.be/en/brexit>
 - Community system: RxSeaport
 - Slides provided by RxSeaport
 - Export and import wizards



To make sure things k
as a business opportu
motivator to re-evalua

just present itself
Let Brexit be your
and out how.

Brexitproof in Zeebrugge



1. BOOKING

Make sure you have a valid booking with your ferry operator

2. CUSTOMS NOTIFICATION

Provide pre-notifications of customs data with [RX/SeaPort](#)

3. GREEN LIGHT


CHECK

Check [RX/SeaPort](#) dashboard if your cargo reached the **GREEN LIGHT** status

from and to Zeebrugge
In 3 steps






You can make your booking with the different ferry operators & short-sea operators, like you did  Brexit.

This procedure does not change.

Without booking the haulier will not be allowed to proceed to the terminal.

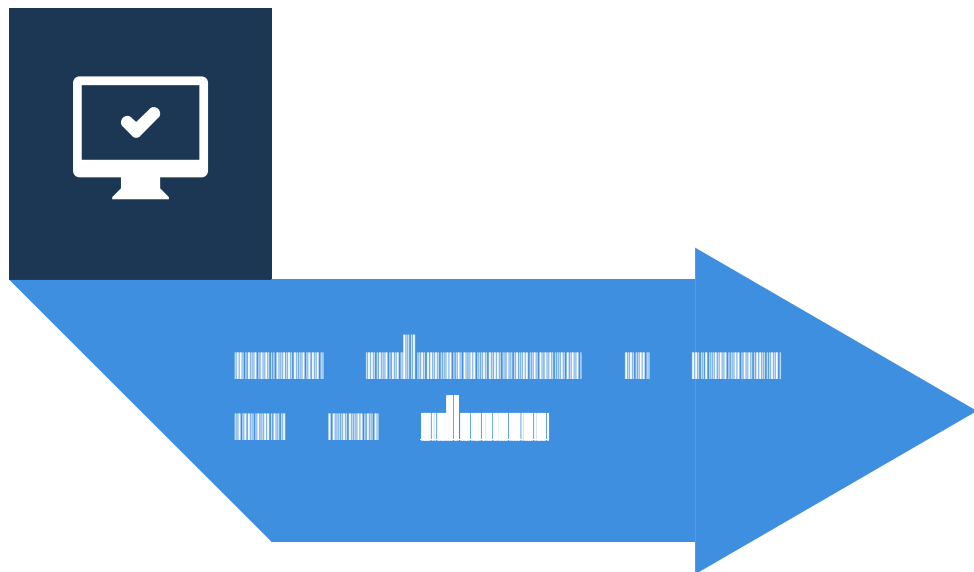


You can make your booking with the different ferry operators & short-sea operators, like you did  Brexit.

You will also be required to provide detailed information about your cargo for safety and security purposes.

Without booking the haulier will not be allowed to proceed to the terminal.





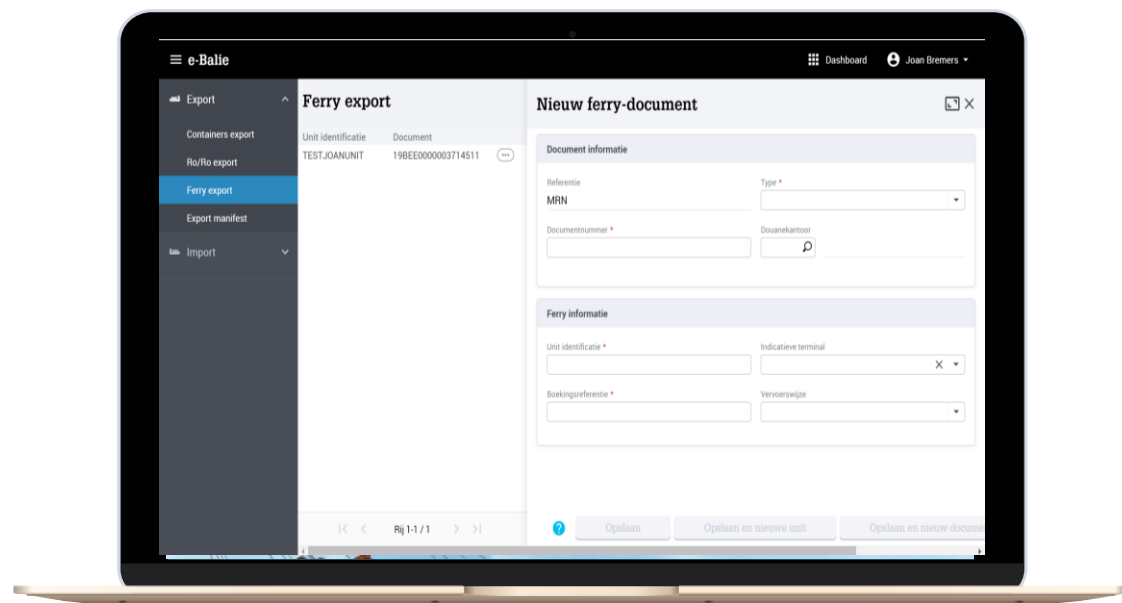
The customs details that are linked to a booking must be pre-notified via the e-Desk ferry application of RX/SeaPort.

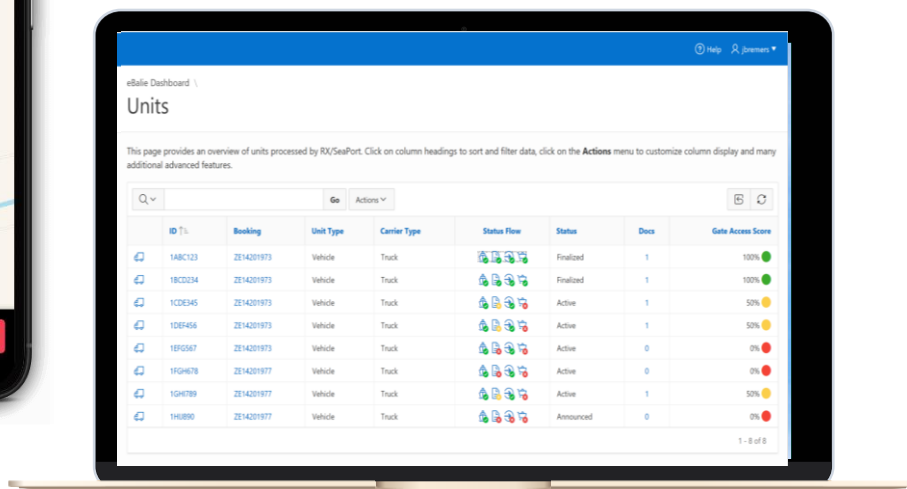
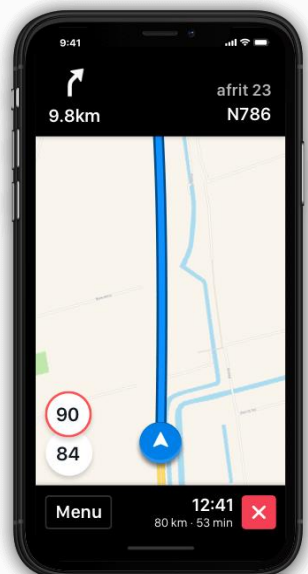
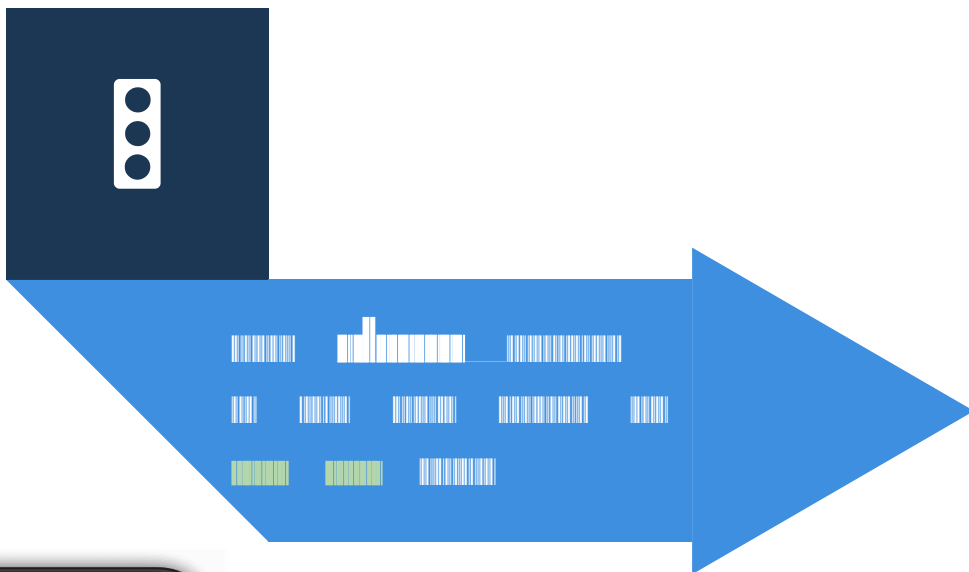
Without the mandatory pre-notification of the customs data, the haulier will not be allowed to proceed to the terminal.



The terminal operator is informed of the customs status of your cargo via the e-Desk ferry application of RX/SeaPort. Based on that information, the cargo can be released for transport.

The cargo cannot be collected without this mandatory pre-notification.

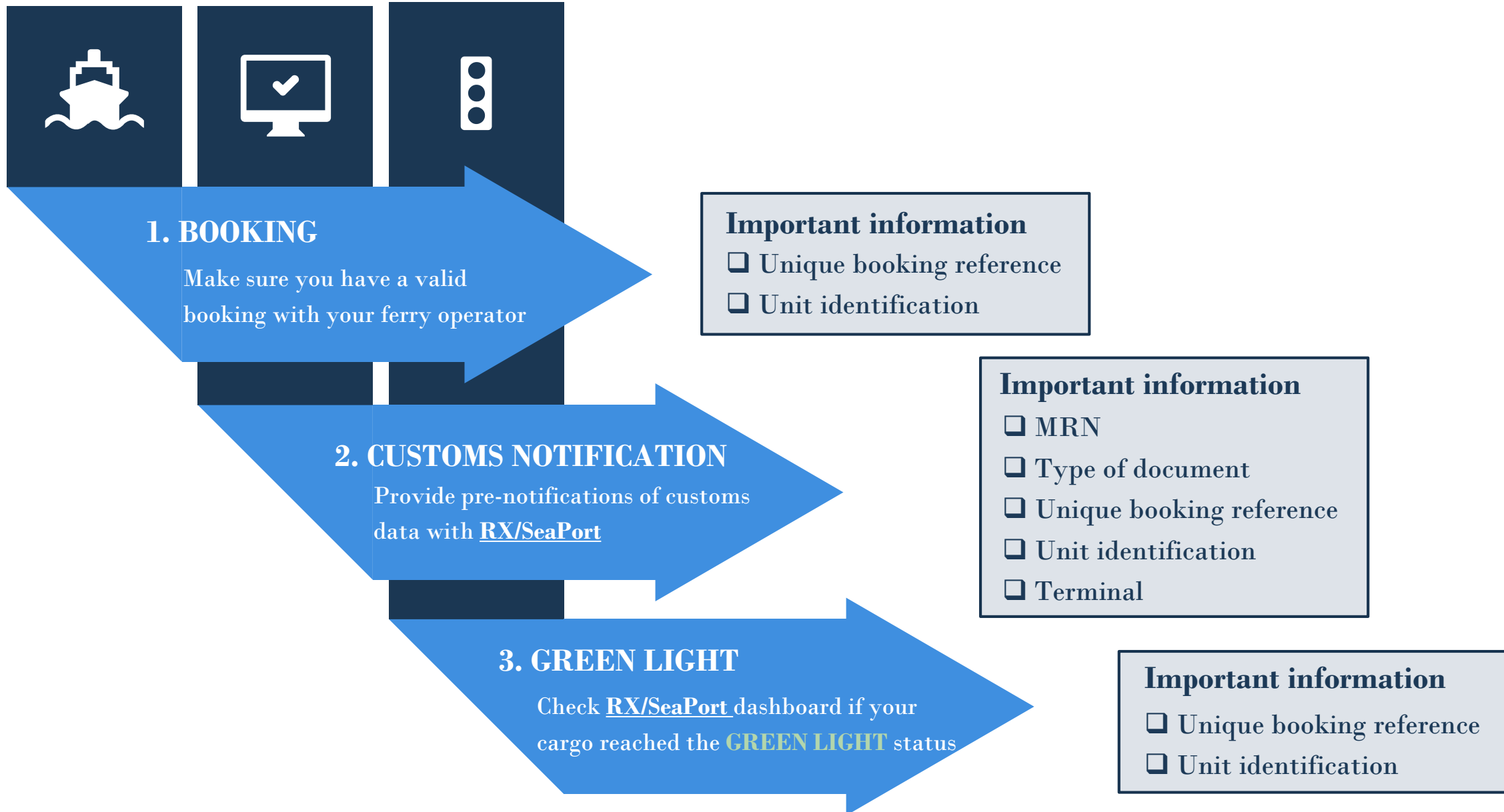




- You should always pre-check your access via the RX/SeaPort dashboard.
- Truckers can easily check whether previous steps are executed via the RX/SeaPort dashboard on their smartphone.



- Cargo with a **RED** light will not be permitted in the Port of Zeebrugge.
- Cargo with an **ORANGE** light will be accompanied to a waiting truck park, where the necessary steps can be taken to obtain green light.
- Cargo with a **GREEN** light may immediately present itself at the gate of the relevant terminal.





Start your preparation now so that in case of Brexit you can easily ship goods via the Port of Zeebrugge

Goods flows

☐ Review your goods flows & logistics

☐ Validate your INCO terms

☐ Determine who makes the customs declarations in the EU

☐ Determine who makes the customs declarations in the UK

☐ Agree who makes the mandatory customs pre-notification with RX/SeaPort

Customs formalities

☐ Request your EORI number for customs

☐ Request the relevant permits from customs

☐ Contact the Brexit coordinators of customs in case of questions

☐ Check whether your goods flows are subject to additional checks (FAVV, FAGG,...)

☐ Contact a customs representative if you have no experience with customs

RX/SeaPort

☐ Register with RX/SeaPort

☐ Subscribe to the e-Desk ferry service of RX/SeaPort

☐ Subscribe to the RX/Dashboard service of RX/SeaPort

☐ Contact RX/Seaport if you want to set up an EDI connection

☐ Encourage your truckers to use the “green lights” check on the RX/Dashboard

